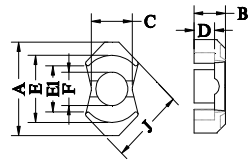
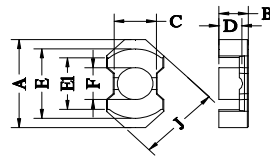


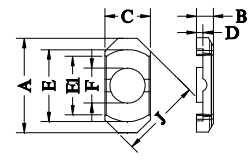
Type.1



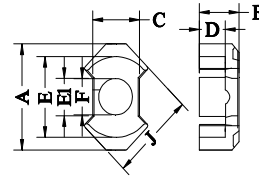
Type.2



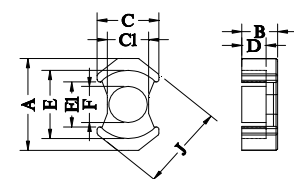
Type.3



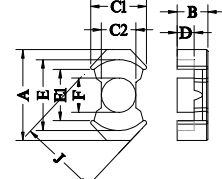
Type.4



Type.5



Type.6



Type.7

| NO.     | Type             | 尺寸(Unit: mm) |            |            |            |          |                |                |                |            |                           | 磁心参数       |                          |                          |      | Al-value (nH/N) <sup>±25%</sup> |       |      |      |      |      | 重量 (g/set) |      |       |      |      |       |       |
|---------|------------------|--------------|------------|------------|------------|----------|----------------|----------------|----------------|------------|---------------------------|------------|--------------------------|--------------------------|------|---------------------------------|-------|------|------|------|------|------------|------|-------|------|------|-------|-------|
|         |                  | A            | B          | C          | C1         | D        | E              | E1             | F              | J          | C1<br>(mm <sup>-1</sup> ) | Le<br>(mm) | Ae<br>(mm <sup>2</sup> ) | Ve<br>(mm <sup>3</sup> ) | KP4  | KP44                            | KP44A | KP47 | KP90 | KP95 | KP4  |            | KP44 | KP44A | KP47 | KP90 | KP95  |       |
| RM4     | RM4/10.4         | 1            | 10.80±0.20 | 5.20±0.05  | 4.45±0.15  |          | 3.60±0.10      | 8.15±0.20      | 5.80min        | 3.70±0.10  | 9.63±0.18                 | 1.69       | 22.00                    | 13.00                    | 286  | 835                             | 835   | 835  | 835  | 817  | 980  | 0.20       | 0.18 | 0.16  | 0.15 | 0.18 | 0.18  | 1.70  |
| RM5     | RM5/10.4         | 1            | 14.65±0.25 | 5.20±0.125 | 6.60±0.20  |          | 3.25±0.20      | 10.40±0.20     | 6.10min        | 4.80±0.125 | 12.05±0.25                | 0.95       | 22.40                    | 23.70                    | 531  | 1509                            | 1509  | 1509 | 1509 | 1476 | 1774 | 0.35       | 0.32 | 0.29  | 0.27 | 0.32 | 0.32  | 3.00  |
| RM6     | RM6/12.5         | 2            | 17.60±0.30 | 6.25±0.20  | 8.00±0.20  |          | 4.10±0.20      | 12.65±0.30     | 8.40min        | 6.30±0.15  | 14.40±0.30                | 0.78       | 28.60                    | 36.60                    | 1047 | 2050                            | 2050  | 2050 | 2050 | 2000 | 2464 | 0.63       | 0.58 | 0.52  | 0.50 | 0.58 | 0.58  | 5.50  |
| RM6-2   | RM6              | 2            | 17.60±0.30 | 6.30±0.10  | 8.00±0.20  |          | 4.20±0.10      | 12.40min       | 8.40min        | 6.30±0.20  | 14.40±0.30                | 0.83       | 31.00                    | 37.00                    | 1147 | 1980                            | 1980  | 1980 | 1980 | 1930 | 2397 | 0.64       | 0.59 | 0.53  | 0.51 | 0.59 | 0.59  | 5.60  |
| RM6-7   | RM6/11.8         | 2            | 17.60±0.30 | 5.9±0.15   | 8.00±0.20  |          | 4.15±0.20/-0.1 | 12.64±0.25     | 8.40min        | 6.30±0.20  | 14.40±0.30                | 0.78       | 28.60                    | 34.52                    | 1047 | 1934                            | 1934  | 1934 | 1934 | 1886 | 2324 | 0.58       | 0.53 | 0.48  | 0.46 | 0.53 | 0.53  | 5.08  |
| RM6-8   | RM6/16.3H        | 2            | 17.6±0.35  | 8.15±0.15  | 8.0±0.3    |          | 5.85±0.15      | 12.65min       | 9.2min         | 6.3±0.2    | 15.0±0.3                  | 0.99       | 36.82                    | 37.35                    | 1375 | 1805                            | 1805  | 1805 | 1805 | 1755 | 2218 | 0.85       | 0.78 | 0.70  | 0.67 | 0.78 | 0.78  | 7.40  |
| RM7     | RM7/13.4         | 2            | 19.90±0.4  | 6.70±0.1   | 7.10±0.15  |          | 4.325±0.125    | 15.15±0.4      | 11.00min       | 7.10±0.15  | 16.85±0.35                | 0.71       | 30.50                    | 42.50                    | 1296 | 2296                            | 2296  | 2296 | 2296 | 2238 | 2775 | 1.09       | 0.72 | 0.66  | 0.62 | 0.72 | 0.72  | 6.90  |
| RM7.5   | RM7.5/14.5       | 6            | 20.0±0.40  | 7.25±0.15  | 12.56 ref  | 8.4±0.2  | 4.9±0.15       | 14.6min        | 9.3min         | 7.8±0.20   | 18.0±0.4                  | 0.67       | 35.40                    | 52.50                    | 1860 | 2598                            | 2598  | 2598 | 2598 | 2529 | 3183 | 1.08       | 0.99 | 0.89  | 0.85 | 0.99 | 0.99  | 9.40  |
| RM8-1   | RM8/16.4         | 1            | 22.75±0.45 | 8.20±0.20  | 10.80±0.20 |          | 5.50±0.20      | 17.30±0.30     | 9.80min        | 8.40±0.15  | 19.35±0.35                | 0.61       | 38.00                    | 62.00                    | 2356 | 2938                            | 2938  | 2938 | 2938 | 2857 | 3621 | 1.44       | 1.31 | 1.19  | 1.13 | 1.31 | 1.31  | 12.50 |
| RM8-2   | RM8/16.8         | 1            | 22.75±0.45 | 8.40±0.20  | 10.80±0.20 |          | 5.75±0.20      | 17.30±0.30     | 9.80min        | 8.40±0.15  | 19.35±0.35                | 0.62       | 38.20                    | 62.00                    | 2368 | 2928                            | 2928  | 2928 | 2928 | 2847 | 3611 | 1.47       | 1.34 | 1.22  | 1.16 | 1.34 | 1.34  | 12.80 |
| RM8-3   | RM8/12.7         | 1            | 22.75±0.45 | 6.35±0.2   | 10.80±0.2  |          | 3.65±0.25      | 17.30±0.3      | 9.80min        | 8.40±0.15  | 19.35±0.35                | 0.43       | 29.00                    | 62.00                    | 1798 | 3446                            | 3446  | 3446 | 3446 | 3361 | 4147 | 1.16       | 1.06 | 0.96  | 0.91 | 1.06 | 1.06  | 10.10 |
| RM8-4   | RM8/16.4         | 1            | 23.55±0.45 | 8.20±0.10  | 10.80±0.2  |          | 5.50±0.15      | 17.30±0.3      | 11.50min       | 8.40±0.15  | 19.30±0.35                | 0.57       | 36.80                    | 62.00                    | 2282 | 2997                            | 2997  | 2997 | 2915 | 3683 | 1.38 | 1.26       | 1.14 | 1.08  | 1.26 | 1.26 | 12.00 |       |
| RM8-6   | RM8/10.9         | 1            | 22.75±0.45 | 5.95±0.15  | 10.80±0.2  |          | 2.75±0.15      | 17.30±0.3      | 9.80min        | 8.40±0.15  | 19.35±0.35                | 0.43       | 28.00                    | 62.00                    | 1736 | 3514                            | 3514  | 3514 | 3514 | 3428 | 4215 | 1.04       | 0.95 | 0.86  | 0.81 | 0.95 | 0.95  | 9.00  |
| RM8-7   | RM8/16.4         | 1            | 22.75±0.4  | 8.2±0.15   | 10.80±0.2  |          | 5.5±0.15       | 17.30±0.3      | 10.35±0.30     | 8.40±0.15  | 19.35±0.35                | 0.58       | 35.60                    | 61.80                    | 2200 | 3048                            | 3048  | 3048 | 3048 | 2966 | 3736 | 1.41       | 1.29 | 1.17  | 1.11 | 1.29 | 1.29  | 12.30 |
| RM8-8   | RM8/15.2C        | 1            | 22.75±0.45 | 7.60±0.15  | 10.80±0.2  |          | 4.90±0.10      | 17.30±0.3      | 11.15±0.30     | 8.40±0.15  | 19.35±0.35                | 0.59       | 36.30                    | 62.00                    | 2251 | 3022                            | 3022  | 3022 | 3022 | 2940 | 3710 | 1.27       | 1.16 | 1.05  | 0.99 | 1.16 | 1.16  | 11.00 |
| RM8-20  | RM8/13.3         | 5            | 23.3±0.6   | 6.65±0.2   | 10.8±0.3   |          | 4.15±0.2       | 17.5min        | 11.10min       | 8.4±0.25   | 20.0±0.5                  | 0.60       | 35.60                    | 59.13                    | 2107 | 2916                            | 2916  | 2916 | 2916 | 2838 | 3574 | 1.27       | 1.16 | 1.05  | 0.99 | 1.16 | 1.16  | 11.00 |
| RM8-24  | RM8/17.2         | 1            | 22.75±0.45 | 8.6±0.15   | 10.80±0.20 |          | 5.9±0.15       | 17.4±0.3       | 11.07min       | 8.40±0.2   | 19.35±0.35                | 0.67       | 40.86                    | 61.40                    | 2509 | 2779                            | 2779  | 2779 | 2779 | 2700 | 3447 | 1.45       | 1.32 | 1.20  | 1.14 | 1.32 | 1.32  | 12.60 |
| RM8-25  | RM8/15           | 7            | 22.25±0.3  | 7.5±0.1    | 13.66±0.2  | 8.4±0.15 | 4.2±0.15       | 17.0min(17.20) | 12.0min(12.47) | 8.4±0.15   | 19.45±0.30                | 0.57       | 35.89                    | 62.42                    | 2240 | 3064                            | 3064  | 3064 | 3064 | 2981 | 3757 | 1.36       | 1.24 | 1.12  | 1.06 | 1.24 | 1.24  | 11.80 |
| RMC8-1  | RMC8             | 4            | 22.75±0.45 | 4.00±0.10  | 10.8±0.2   |          | 1.50±0.10      | 17.30±0.3      | 14.1±0.3       | 8.40±0.15  | 19.35±0.40                | 0.42       | 24.60                    | 58.40                    | 1441 | 3546                            | 3546  | 3546 | 3546 | 3465 | 4204 | 0.76       | 0.69 | 0.63  | 0.60 | 0.69 | 0.69  | 6.60  |
| RM9-1   | RM9/14.5         | 1            | 25.5±0.5   | 7.45±0.2   | 12.8±0.3   |          | 4.75±0.2       | 19.7min(20.2)  | 13.2min(14.20) | 10.2±0.25  | 22.0±0.5                  | 0.47       | 38.80                    | 83.02                    | 3221 | 3883                            | 3883  | 3883 | 3883 | 3775 | 4795 | 1.89       | 1.72 | 1.56  | 1.48 | 1.72 | 1.72  | 16.40 |
| RMC10-1 | RMC10/14.4/12.25 | 4            | 27.85±0.45 | 7.20±0.15  | 13.25±0.25 |          | 4.4±0.15       | 21.65±0.4      | 18.0±0.4       | 10.7±0.15  | 25.7±0.4                  | 0.47       | 40.30                    | 85.80                    | 3457 | 3918                            | 3918  | 3918 | 3918 | 3807 | 4854 | 1.97       | 1.80 | 1.63  | 1.55 | 1.80 | 1.80  | 17.17 |
| RM10-1  | RM10/18.6A       | 1            | 27.85±0.65 | 9.30±0.20  | 13.25±0.25 |          | 6.35±0.15      | 21.65±0.45     | 13.50min       | 10.70±0.20 | 24.15±0.55                | 0.50       | 46.00                    | 92.00                    | 4232 | 3854                            | 3854  | 3854 | 3854 | 3740 | 4829 | 2.47       | 2.26 | 2.04  | 1.94 | 2.26 | 2.26  | 21.50 |
| RM10-3A | RM10/16.9        | 1            | 27.85±0.65 | 8.45±0.20  | 13.25±0.25 |          | 5.50±0.30      | 21.65±0.45     | 13.30min       | 10.70±0.20 | 24.15±0.55                | 0.46       | 42.60                    | 92.00                    | 3919 | 4053                            | 4053  | 4053 | 4053 | 3937 | 5046 | 2.30       | 2.10 | 1.90  | 1.81 | 2.10 | 2.10  | 20.00 |
| RM10-5  | RM10/18.6B       | 1            | 28.20±0.3  | 9.30±0.1   | 13.25±0.25 |          | 6.50±0.15      | 22.00±0.3      | 14.20min       | 10.65±0.15 | 24.20±0.3                 | 0.45       | 46.70                    | 88.50                    | 4133 | 3670                            | 3670  | 3670 | 3670 | 3561 | 4605 | 2.46       | 2.25 | 2.03  | 1.93 | 2.25 | 2.25  | 21.40 |
| RM10-6  | RM10/15          | 1            | 27.85±0.40 | 7.75±0.2   | 13.25±0.25 |          | 4.80±0.30      | 21.65±0.45     | 13.00min       | 10.70±0.2  | 24.15±0.40                | 0.43       | 40.00                    | 92.20                    | 3688 | 4230                            | 4230  | 4230 | 4230 | 4111 | 5238 | 2.19       | 2.00 | 1.81  | 1.71 | 2.00 | 2.00  | 19.00 |
| RM10-16 | RM10D            | 3            | 29.45±0.65 | 8.80±0.15  | 13.25±0.25 |          | 6.15±0.15      | 23.25±0.45     | 17.045±0.45    | 10.70±0.20 | 25.28±0.55                | 0.55       | 46.30                    | 84.00                    | 3889 | 3503                            | 3503  | 3503 | 3503 | 3400 | 4393 | 2.38       | 2.17 | 1.97  | 1.87 | 2.17 | 2.17  | 20.70 |
| RM10-17 | RM10A            | 1            | 27.80±0.65 | 9.30±0.15  | 13.25±0.25 |          | 6.40±0.20      | 21.65±0.45     | 12.50min       | 10.65±0.2  | 24.15±0.55                | 0.53       | 45.70                    | 93.30                    | 4264 | 3925                            | 3925  | 3925 | 3925 | 3810 | 4916 | 2.44       | 2.23 | 2.01  | 1.91 | 2.23 | 2.23  | 21.20 |
| RM10-19 | RM10/18.6C       | 5            | 27.85±0.65 | 9.30±0.15  | 13.25±0.25 |          | 6.35±0.15      | 21.65±0.45     | 13.00min       | 10.70±0.2  | 24.15±0.55                | 0.46       | 44.00                    | 95.00                    | 4224 | 4098                            | 4098  | 4098 | 4098 | 3979 | 5116 | 2.48       | 2.27 | 2.05  | 1.95 | 2.27 | 2.27  | 21.60 |
| RM12-1  | RM12/24.5        | 1            | 36.8±0.6   | 12.25±0.1  | 15.85±0.25 |          | 8.55±0.15      | 25.5±0.6       | 14.46ref       | 12.6±0.20  | 29.2±0.6                  | 0.39       | 57.00                    | 146.00                   | 8322 | 5275                            | 5275  | 5275 | 5275 | 5109 | 6727 | 5.27       | 4.81 | 4.35  | 4.13 | 4.81 | 4.81  | 45.80 |