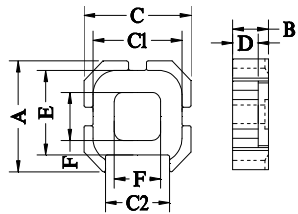
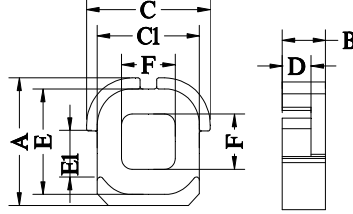


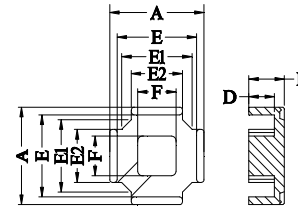
Type.1



Type.2



Type.3



Type.4

NO.	Type	尺寸(Unit : mm)										磁心参数				Al-value (nH/N ²)±25%			功耗Max (W/set)			重量 (g/set)
		A	B	C	C1	C2	D	E	E1	E2	F	C1	Le	Ae	Ve	KP44	KP44A	KP95	KP44	KP44A	KP95	
												(mm ⁻¹)	(mm)	(mm ²)	(mm ³)							
QD25-1	1	26.00±0.4	7.00±0.2				4.40±0.2	21.50min	19.30±0.3	14.00±0.2	10.80±0.2	0.35	41.10	117.00	4386	5650	5650	6996	2.28	2.06	2.28	21.70
QD26-1	4	25.8±0.35	8.0±0.1				5.3±0.15	21.7±0.3	19.2ref	14.0±0.2	10.5±0.15	0.36	42.80	118.00	5055	5411	5411	6677	2.58	2.34	2.58	24.60
QD29-1	1	29.00±0.45	9.80±0.2				6.8±0.2	24.10min	22.50±0.30	16.50±0.2	12.30±0.2	0.35	54.50	154.00	8417	6125	6125	7740	3.98	3.60	3.98	37.90
QD30-1	2	30.00±0.40	10.00±0.20	30.00±0.40	24.90±0.4	18.00±0.40	7.15±0.20	24.90±0.4			13.00±0.30	0.35	59.50	171.00	10175	6298	6298	8005	4.48	4.06	4.48	42.70
QD30-2	3	30.00±0.4	10.50±0.2	30.00±0.4	24.80±0.4		7.00±0.2	30.00±0.4	10.80±0.3		13.00±0.3	0.29	51.50	178.90	9222	6942	6942	8168	5.04	4.56	5.04	48.00
QD34-1	1	34.70±0.40	4.95±0.15				2.15±0.15		25.10±0.30	17.50±0.20	12.30±0.20	0.23	39.30	168.00	6591	8475	8475	10458	3.31	2.99	3.31	31.50