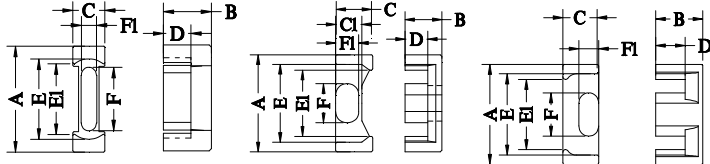


Type.1

Type.2



Type.3

Type.4

Type.5

NO.	Type	尺寸(Unit : mm)										磁心参数				Al-value (nH/N ²)±25%						重量 (g/set)						
		A	B	C	C1	D	E	E1	F	F1	C1	Le	Ae	Ve	(nH/N ²)±25%													
											(mm ⁻¹)	(mm)	(mm ²)	(mm ³)	KP4	KP44	KP44A	KP47	KP90	KP95	KP4		KP44	KP44A	KP47	KP90	KP95	
EPC13-1	EPC13/13	1	13.30±0.30	6.60±0.20	4.60±0.15		4.50±0.20	10.50min	8.30min	5.60±0.15	2.05±0.10	2.45	30.60	12.50	383	862	862	862	898	791	1186	0.24	0.22	0.20	0.19	0.22	0.22	2.08
EPC13-2	EPC1313	1	13.2±0.4	6.6±0.15	6.5±0.15		4.5±0.15	10.8±0.3/-0.2	8.30min	5.6±0.15	3.55±0.1	1.54	31.00	20.10	623	1371	1371	1371	1428	1257	1885	0.36	0.33	0.30	0.28	0.33	0.33	3.12
EPC17-1	EPC17/17	1	17.60±0.40	8.55±0.20	6.00±0.15		6.05±0.20	14.30min	11.50min	7.70±0.15	2.80±0.15	1.76	40.20	22.80	917	1200	1200	1200	1249	1100	1649	0.54	0.49	0.45	0.42	0.49	0.49	4.70
EPC17-6	EPC17	1	17.4±0.35	8.4±0.1	7.0±0.15		5.7±0.15	13.85min	11.7min	7.7±0.15	3.8±0.15/-0.1	1.33	39.95	29.98	1198	1587	1587	1587	1653	1455	2183	0.64	0.59	0.53	0.51	0.59	0.59	5.60
EPC17-7		5	17.5±0.3	4.4±0.2	8.5±0.2		2.85±0.15	14.0min	10.9min	7.7±0.2	3.8±0.15	0.99	24.32	24.68	600	2132	2132	2132	2221	1955	2932	0.43	0.39	0.35	0.33	0.39	0.39	3.70
EPC18-1	EPC18/17.6	5	18.0±0.35	8.8±0.20	6.7±0.20		5.50±0.15	14.00min	12.00min	7.80±0.20	3.70±0.15	1.33	38.00	28.60	1087	1587	1587	1587	1653	1455	2183	0.74	0.67	0.61	0.58	0.67	0.67	6.40
EPC19-1	EPC19/19.5	1	19.10±0.40	9.75±0.20	6.00±0.15		7.25±0.20	15.80min	13.10min	8.50±0.15	2.50±0.10	2.17	47.96	22.04	1057	973	973	973	1013	892	1338	0.60	0.55	0.49	0.47	0.55	0.55	5.20
EPC27-1	EPC27/32	1	27.10±0.50	16.00±0.20	8.00±0.15		12.00±0.20	21.60min	18.50min	13.30±0.30	4.00±0.10	1.34	73.10	54.60	3991	1577	1577	1577	1643	1445	2168	2.14	1.95	1.77	1.68	1.95	1.95	18.60
EPC28-1	EPC28/23.4	5	28.0±0.4	11.7±0.15	6.5±0.2		8.4±0.2	22.4±0.4	21.0±0.4	13.75±0.25	3.0±0.15	1.51	61.15	40.53	2478	1398	1398	1398	1456	1282	1922	1.39	1.27	1.15	1.09	1.27	1.27	12.10
EPC30-1	EPC30/35	4	30.40±0.4	17.40±0.2	12.00±0.3	8.50±0.3	12.80±0.2	24.40±0.4	20.70±0.4	12.20±0.3	7.50±0.3	0.95	78.40	82.60	6478	2222	2222	2222	2315	2037	3056	3.73	3.40	3.08	2.92	3.40	3.40	32.40
EPC37-1	EM3739	4	37.00±0.4	19.80±0.2	12±0.2/-0.3	8.00±0.2	14.00±0.2	28.70±0.4	25.50±0.4	16.00±0.25	7.50±0.3	0.83	87.30	104.70	9136	2544	2544	2544	2650	2332	3497	5.58	5.09	4.61	4.38	5.09	5.09	48.50
EPC40-1	EPC40/32	3	40.00±0.5	16.00±0.3	12.50±0.25		8.50±0.2	30.60±0.4	26.30min	24.20±0.25	6.00±0.15	0.57	75.70	132.00	9992	3681	3681	3681	3835	3374	5062	5.70	5.21	4.71	4.48	5.21	5.21	49.60
EPC40-2	EM4042	4	40.2±0.5	21.05±0.2	12.0±0.2/-0.2	8.5±0.25	14.25±0.2	29.1±0.5/-0.4	25.5±0.5/-0.4	16.0±0.25	7.0±0.2	0.80	96.54	121.10	11696	2639	2639	2639	2749	2419	3629	6.76	6.17	5.59	5.31	6.17	6.17	58.80
EPC46.5-1	EPC46.5/22	2	46.50±1.0	22±0.4/-0.2	19.60±0.2		15.6±0.4/-0.2	37.20min	30.00min	21.00±0.3	12.00±0.2	0.78	101.00	229.00	23130	2707	2707	2707	2819	2481	3722	13.87	12.66	11.46	10.88	12.66	12.66	120.60
EPC54-1	EPC54/54	2	54.50±1.0	27.2±0.4/-0.2	21.50±0.2		19.3±0.4/-0.2	43.00min	34.30min	26.50±0.3	14.00±0.2	0.39	130.80	336.00	43950	5413	5413	5413	5639	4962	7443	23.07	21.06	19.06	18.10	21.06	21.06	200.60