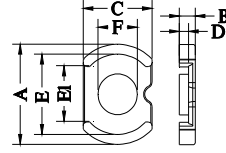
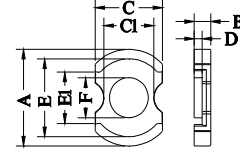


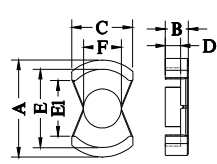
Type.1



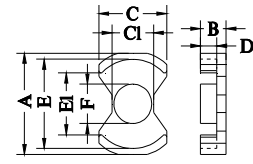
Type.2



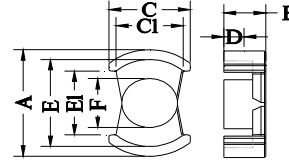
Type.3



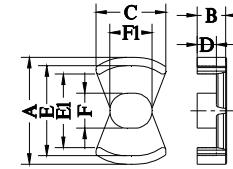
Type.4



Type.5



Type.6



Type.7

NO.	Type	5	尺寸(Unit: mm)								磁心参数				Al-value (nH/N <sup>2</sup> )±25%						重量 (g/set)							
			A	B	C	C1	D	E	E1	F	F1	C1 (mm <sup>-1</sup> )	Le (mm)	Ae (mm <sup>2</sup> )	Ve (mm <sup>3</sup> )	KP4	KP44	KP44A	KP47	KP90		KP95	KP4	KP44	KP44A	KP47	KP90	KP95
PJ39-6	PQ3916	5	39.0±0.60	8.35±0.20	19.20±0.30	15.30±0.30	5.65±0.20	33.40±0.60	28.94±0.60	13.90±0.25		15.00	54.10	109.20	5908	4496	4496	4496	4496	4344	5866	3.73	3.40	3.08	2.92	3.40	3.40	32.40
PJ39-7	PQ3917	5	39.2±0.6	8.55±0.20	19.6±0.30	15.0±0.30	5.05±0.20	32.80±0.60	28.02±0.60	14.3±0.25		0.39	53.60	138.20	7412	5460	5460	5460	5460	5284	7019	4.32	3.95	3.57	3.39	3.95	3.95	37.60
PJ40-1	PJ4026	1	39.80±0.50	13.50±0.20	28.30±0.35		9.90±0.20	33.20±0.50	20.80min	16.00±0.25		0.35	71.30	205.00	14616	6032	6032	6032	6283	5529	8294	8.51	7.77	7.03	6.68	7.77	7.77	74.00
PJ40-2	PJ4022.5A	1	39.80±0.50	11.25±0.20	28.30±0.35		7.65±0.20	33.20±0.50	20.80min	16.00±0.25		0.32	63.00	203.00	12992	6597	6597	6597	6872	6048	9071	7.56	6.90	6.24	5.93	6.90	6.90	65.70
PJ40-3	PJ4020	1	39.80±0.50	10.10±0.20	28.30±0.35		6.50±0.20	33.20±0.50	20.80min	16.00±0.25		0.30	61.00	203.00	12383	7037	7037	7037	7330	6451	9676	6.99	6.38	5.78	5.49	6.38	6.38	60.80
PJ40-4	CC4015.4	3	39.80±0.5	7.70±0.1	28.30±0.4	19.90(ref)	4.75±0.15	33.20±0.5	21.80min	16.00±0.25		0.24	44.30	184.00	8167	8796	8796	8796	9163	8063	12095	5.22	4.77	4.31	4.10	4.77	4.77	45.40
PJ40-5	PJ40/17	1	39.80±0.50	8.65±0.15	28.30±0.35		5.65±0.20	33.20±0.50	20.80min	16.00±0.25		0.27	53.60	200.00	10720	7819	7819	7819	8145	7167	10751	6.03	5.50	4.98	4.73	5.50	5.50	52.40
PJ40-6	CC4022.5	3	39.60±0.45	11.25±0.1	28.3±0.35	22.30(ref)	7.65±0.15	33.10±0.4	20.40±0.35	16.00±0.25		0.30	59.90	201.70	12082	7037	7037	7037	7330	6451	9676	7.28	6.65	6.01	5.71	6.65	6.65	63.30
PJ40-7	PJ40/17.8	3	39.80±0.45	8.90±0.20	28.30±0.35		5.90±0.20	33.20±0.5	20.80min	16.00±0.25		0.27	51.48	191.00	9813	7819	7819	7819	8145	7167	10751	5.75	5.25	4.75	4.51	5.25	5.25	50.00
PJ40-13	PJ40/16.5	1	39.80±0.50	8.25±0.1	28.30±0.40		5.30±0.1	33.20±0.50	22.0±0.50	16.00±0.25		0.27	49.30	188.00	8912	7937	7937	7937	8267	7275	10913	5.46	4.99	4.51	4.29	4.99	4.99	47.50
PJ43-1	PJ4322	1	43.00±0.50	11.00±0.2	29.30±0.35		6.50±0.20	36.00±0.50	25.00min	19.00±0.3		0.25	65.40	256.47	16773	8445	8445	8445	8796	7741	11611	9.20	8.40	7.60	7.22	8.40	8.40	80.00
PJ43-2	PJ4320	5	43.00±0.60	10.1±0.20	27.0±0.30	18.4REF	5.80±0.20	37.0±0.60	27.93±0.60	17.0±0.25		0.28	59.70	212.60	12701	7540	7540	7540	7854	6912	9538	7.14	6.52	5.90	5.60	6.52	6.52	62.10
PJ53-1	PQ5317	5	53.19±0.55	9.0±0.20	38.4±0.40	20.3±0.3	5.5±0.20	48.0±0.4	31.66±0.4	18.8±0.3		0.27	64.27	235.00	15102	7819	7819	7819	8145	7167	9538	8.96	8.18	7.40	7.03	8.18	8.18	77.90