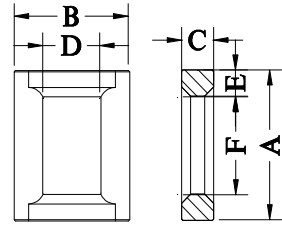
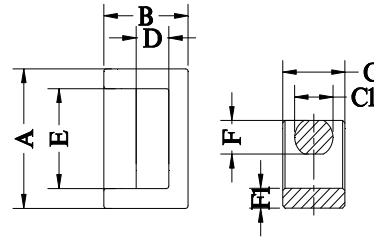


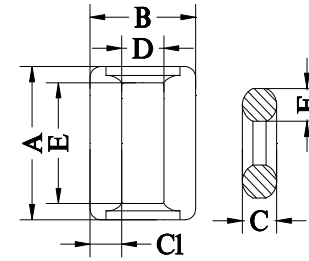
Type.1



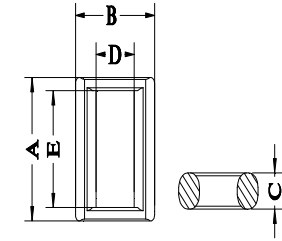
Type.2



Type.3



Type.4



Type.5

NO.	Type	尺寸(Unit: mm)								磁心参数				Al-value (nH/N <sup>2</sup> )±25%			重量 (g/set)
		A	B	C	C1	D	E	F	F1	C1 (mm <sup>-1</sup> )	Le (mm)	Ae (mm <sup>2</sup> )	Ve (mm <sup>3</sup> )	KL7	KL10A	KL12	
		FT18-1	3	18.0±0.3	11.1±0.3	8.0±0.30	4.6±0.20	4.0±0.30	13.0±0.25	4.6±0.20	2.5±0.2	2.04	39.40	19.30	761		
FT18-2	3	18.40±0.3	11.1±0.3	9.0±0.30	4.6±0.20	4.50±0.30	14.4±0.30	4.6±0.20	2.0±0.2	2.44	43.92	18.00	792				4.37
ET20	1	20.10±0.40	20.10±0.40	4.40±0.20		15.70min	15.70min	4.00±0.20		2.98	52.50	17.60	924	3100±25%	4300±30%		4.60
ET20C	1	20.10±0.40	20.10±0.40	5.40±0.20		15.70min	15.70min	4.00±0.20		2.40	50.50	21.10	1066	3800±25%	5270±30%		5.60
ET24	1	24.20±0.50	24.20±0.50	4.00±0.30		19.00min	19.00min	4.00±0.20		3.43	61.00	17.80	1086	2600±25%	3800±30%		5.60
FT24.5-1	5	24.5±0.4	21.9±0.4	6.2±0.2		10.5±0.25	20.0±0.30			3.40	65.15	19.10	1245				9.00
ET25	1	25.50±0.50	25.50±0.50	5.00±0.30		19.20min	19.20min	5.00±0.20		2.30	62.30	27.60	1721	3200±25%	4000±30%		8.50
ET25-2	1	24.7±0.5	24.7±0.5	6.9±0.2		19.8±0.5	19.5+0.85/-0.4	6.60±0.20		1.76	60.80	34.60	2105				11.00
ET28	1	28.70±0.50	28.70±0.50	5.00±0.30		22.20min	22.20min	5.00±0.30		2.69	70.00	26.00	1820	3500±25%	4800±30%		10.50
FT17	3	17.20±0.20	10.80±0.20	8.00±0.20	4.9±0.20	4.20±0.20	12.30±0.20	4.15±0.15	2.45±0.15	2.50	47.50	18.90	899	3500±25%	5000±30%	6000±30%	4.30
FT23	2	22.80±0.4	18.10±0.4	5.00±0.3		9.10±0.4	4.00±0.25	14.80±0.4		3.50	62.00	17.80	1100	2100±25%	3200±30%		5.90
FT25	2	24.70±0.50	21.30±0.50	5.20±0.30		11.50±0.40	4.90±0.25	15.90±0.40		2.70	69.00	25.50	1760	3250±25%	4800±30%		7.50
FT28-1	4	28.0±0.3	20.0±0.3	6.5±0.2	3.0±0.2	8.0±0.2	22.1±0.3	6.0±0.2		2.43	67.60	27.80	1878				10.60