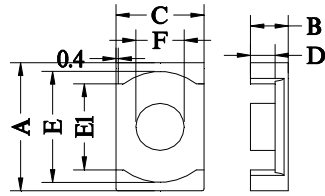
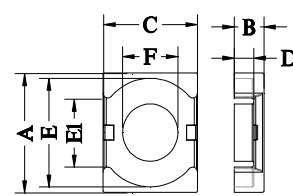


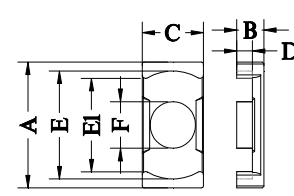
Type.1



Type.2



Type.3



Type.4

NO.	Type	尺寸(Unit: mm)								磁心参数				Al-value (nH/N ²)±25%					功耗Max (W/set)					重量 (g/set)
		A	B	C	D	E	E1	F	C1	Le	Ae	Ve	KP4	KP44	KP44A	KP90	KP95	KP4	KP44	KP44A	KP90	KP95		
		(mm ⁻¹)	(mm)	(mm ²)	(mm ³)																			
EQ18-1	EQ1806	2	18.00±0.35	3.15±0.1	9.70±0.2	1.60±0.10	15.60±0.3	13.50min	6.20±0.15	0.71	21.50	30.00	656	2973	2973	2973	2726	4088	0.40	0.36	0.33	0.36	0.36	3.45
EQ25-1	EQ2511	1	25.4±0.4	5.7±0.15	18.1±0.3	3.65±0.15	22.1±0.4	17.6±0.4	11.0±0.3	0.44	36.35	83.36	3030	4798	4798	4798	4398	6597	1.85	1.69	1.53	1.69	1.69	16.10
EQ26-1	EQ26	1	26.00±0.40	8.50±0.15	17.50±0.30	5.80±0.20	21.90min	16.60min	11.20±0.20	0.47	46.20	98.60	4555	4118	4118	4118	3997	5163	2.67	2.44	2.20	2.44	2.44	23.20
EQ26-2	ER2626	1	26.0±0.5	12.8±0.15	17.0±0.3	9.4±0.15	21.4±0.50	18.0±0.5	11.2±0.2	0.58	61.87	106.20	6569	3617	3617	3617	3501	4642	3.75	3.42	3.10	3.42	3.42	32.60
MPM27-1	MPM272314	1	25.9±0.4	6.8±0.15	17.6±0.35	4.3±0.15	22.2±0.4	16.4±0.4	11.2±0.25	0.35	39.78	95.00	3780	4374	4374	4374	4251	5413	2.25	2.06	1.86	2.06	2.06	19.60
EQ29-1	ER2918W	1	29.0±0.5	8.8±0.15	16.0±0.3	5.7±0.15	23.0 ^{+0.5/-0.2}	21.5min	11.6±0.2	0.47	48.80	103.80	5067	4178	4178	4178	4053	5262	2.93	2.68	2.42	2.68	2.68	25.50
EQ30-5	EQ3016C	1	30.00±0.4	8.00±0.2	20.00±0.3	5.30±0.2	26.00±0.4	20.10min	11.00±0.2	0.42	45.00	107.00	4815	5020	5020	5020	4602	6902	3.06	2.79	2.53	2.79	2.79	26.60
EQ30-6	EQ3019	1	30.00±0.5	9.40±0.2	20.30±0.3	6.60±0.2	25.40±0.4	20.10min	13.30±0.2	0.36	49.70	138.00	6859	5862	5862	5862	5373	8060	3.82	3.49	3.15	3.49	3.49	33.20
EQ30-10	EER3013	4	30.0±0.5	6.65±0.15	15.0±0.3	3.85±0.15	25.7±0.5	22.19±0.5	11.1±0.2	0.48	41.71	87.60	3652	4398	4398	4398	4032	6048	2.12	1.93	1.75	1.93	1.93	18.40
EQ31	EQ3121	1	31.50±0.5	10.60±0.2	20.30±0.3	7.80±0.15	27.00±0.5	22.50±0.5	13.20±0.2	0.44	55.85	127.00	7086	4801	4801	4801	4401	6601	4.36	3.98	3.60	3.98	3.98	37.92
EQ31-2	EER3118W	1	31.0±0.50	8.9±0.15	12.4±0.20	5.15±0.15	24.0±0.50	22.8±0.50	11.0±0.20	0.54	50.30	93.60	4704	3774	3774	3774	3657	4701	2.68	2.45	2.21	2.45	2.45	23.30
EQ31-5	ER3118WN	1	31.0±0.5	8.8±0.15	16.0±0.3	5.7±0.15	25.1±0.4	23.5min	11.6±0.2	0.47	48.20	102.40	4935	4253	4253	4253	4123	5282	2.99	2.73	2.47	2.73	2.73	26.00
EQ33-1	EQ3324	1	33.00±0.5	12.20±0.15	24.00±0.3	9.20±0.15	28.60min	23.90min	13.85±0.2	0.41	61.70	150.00	9252	5149	5149	5149	4720	7080	5.69	5.20	4.70	5.20	5.20	49.50
EQ33-2A	EQ3319	1	33.00±0.5	9.50±0.20	24.00±0.4	6.50±0.15	28.60min	23.90min	13.85±0.3	0.37	55.00	150.00	8250	5768	5768	5768	5287	7931	4.89	4.46	4.04	4.46	4.46	42.50
EQ33-3	EQ3314	1	33.00±0.5	7.00±0.2	25.00±0.4	3.75±0.20	29.00±0.5	24.50min	14.80±0.3	0.25	41.20	164.00	6757	8404	8404	8404	7703	11555	4.36	3.98	3.61	3.98	3.98	37.95
EQ34-1	EQ3412	1	34.50±0.5	6.20±0.2	22.00±0.4	2.70±0.1	30.20±0.4	23.24±0.5	14.00±0.2	0.24	37.70	154.60	5843	8657	8657	8657	7936	11904	3.83	3.50	3.16	3.50	3.50	33.30
EQ34-2	EQ34/24/11.9	1	34.5±0.5	5.95±0.2	24.0±0.3	2.7±0.1	30.2±0.4	22.0±0.5	14.0±0.2	0.26	41.39	159.00	6598	8120	8120	8120	7443	11165	3.97	3.63	3.28	3.63	3.63	34.54
EQ36-1	EQ3613	1	36.00±0.6	6.40±0.2	20.30±0.3	3.40±0.2	31.00±0.6	26.20min	13.30±0.2	0.33	42.80	130.00	5564	6412	6412	6412	5878	8817	3.45	3.15	2.85	3.15	3.15	30.00
EQ38-1	EER3835	1	38.0±0.5	9.0±0.15	35.0±0.5	4.5±0.15	35.1±0.4	20.3±0.4	13.45±0.25	0.22	50.10	225.50	11293	9596	9596	9596	8796	13195	8.53	7.79	7.05	7.79	7.79	74.20
MPM38-1	MPM383214	1	38.0±0.5	6.8±0.15	21.3±0.4	3.8±0.15	32.8±0.5	26.5±0.5	14.5±0.3	0.35	48.40	140.00	6782	6032	6032	6032	5529	8294	4.00	3.65	3.31	3.65	3.65	34.80
EQ38-2	EQ3814	1	38.0±0.5	7.1±0.2/-0	28.0±0.4	3.6±0.2/-0.1	33.0±0.7/-0	27.5min	16.3±0.15/-0.2	0.24	49.30	203.50	10031	8796	8796	8796	8063	12095	5.85	5.34	4.84	5.34	5.34	50.90
EQ41-1	EQ4120	3	39.50±0.5	10.15±0.15/-0.20	32.50±0.3	6.65±0.25	36.00±0.6	22.90±0.4	19.00±0.25	0.23	58.80	256.10	15059	9179	9179	9179	8414	12621	9.06	8.27	7.49	8.27	8.27	78.80
EQ47-1	EER4730	1	46.85±0.45	15.0±0.2	28.0±0.30	10.0±0.20	40.0±0.50	30.9min	18.0±0.25	0.30	82.90	273.10	22643	7037	7037	7037	6451	9676	13.34	12.18	11.02	12.18	12.18	116.00
EC60-1	EER6027	1	60.0±0.60	13.5±0.20	21.5±0.30	5.25±0.20	44.9±0.55	40.66ref	21.5±0.30	0.20	71.45	357.20	25522	7037	7037	7037	6451	9676	15.93	14.54	13.16	14.54	14.54	138.50