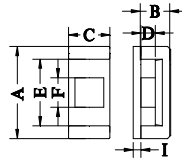
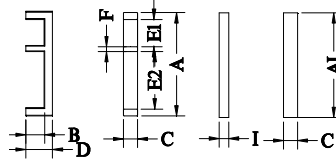


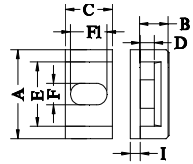
Type.1



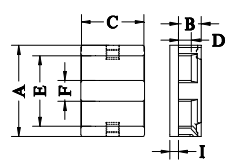
Type.2



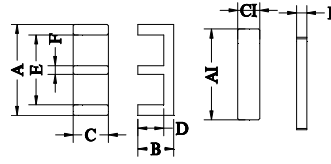
Type.3



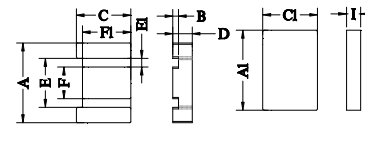
Type.4



Type.5



Type.6



Type.7

NO.	Type	尺寸(Unit : mm)											磁心参数				Al-value (nH/N ²)±25%					重量 (g/set)							
		A	B	C	D	E	E1	E2	F	F1	AI	CI	I	C1 (mm ⁻¹)	Le (mm)	Ae (mm ²)	Ve (mm ³)	KP4	KP44	KP44A	KP90		KP95	KP4	KP44	KP44A	KP90	KP95	
EIW11-1A	4	11.00±0.2	3.00±0.1	8.85±0.15	2.00±0.15	9.00±0.2			2.40±0.125	7.85±0.15			1.00±0.1	1.03	16.40	16.00	262	2060	2060	2060	1888	2832	0.15	0.14	0.12	0.14	0.14	1.30	
EI11.4	7	11.4±0.2	2.85±0.1	8.0±0.2	0.85±0.1	7.02±0.2	1.25±0.1		4.52±0.15	7.1±0.20	11.4±0.2	8.0±0.2	2.09±0.1	0.34	10.90	32.30	352												2.00
EI16-1	EI1608A	1	16.65±0.3	6.65±0.2	8.95±0.15	5.15±0.2	13.45±0.3/-0.2		3.0±0.15				1.3±0.1	1.32	35.85	27.30	977	1599	1599	1599	1466	2199	0.38	0.35	0.31	0.35	0.35	3.30	
EI17-1	2	16.80±0.3	10.00±0.15	7.00±0.2	8.20±0.2	13.6±0.6/-0.4			5.00±0.15				1.80±0.1	1.17	31.05	26.40	820	1804	1804	1804	1654	2481	0.49	0.45	0.41	0.45	0.45	4.30	
EI18-1	2	18.40±0.30	10.00±0.10	8.00±0.15	8.20±0.15	14.70min			5.00±0.10				1.80±0.05	1.09	31.10	28.54	888	1937	1937	1937	1776	2664	0.56	0.51	0.47	0.51	0.51	4.90	
EI18-2	2	18.40±0.30	10.30±0.10	8.00±0.15	8.50±0.15	14.70min			5.00±0.10				1.80±0.10	1.10	31.50	28.54	899	1919	1919	1919	1759	2639	0.58	0.53	0.48	0.53	0.53	5.07	
EI18-3	1	18.40±0.4	10.20±0.15	8.00±0.2	8.00±0.2	14.50min			5.00±0.10				1.80±0.15	1.09	3.11	28.54	888	1937	1937	1937	1775	2663	0.55	0.50	0.46	0.50	0.50	4.80	
EI18-4	2	18.4±0.5/-0.4	12.20±0.15	8.00±0.20	10.20±0.20	14.70min			5.00±0.10				1.80±0.10	1.24	35.50	28.54	1013	1703	1703	1703	1561	2341	0.62	0.57	0.51	0.57	0.57	5.40	
EI20-1	EI20/10.5/8	6	20.0±0.30	8.15±0.20	8.0±0.20	5.85±0.20	15.4±0.30		1.9±0.10		20.3±0.30	5.0±0.20	2.3±0.10	0.54	52.20	96.60	5043	KL10(3480)											4.54
EI22-1	2	21.50±0.30	10.4±0.15/-0.06	12.50±0.20	8.4±0.15/-0.1	17.30min			8.50±0.15				2.00±0.05	0.73	36.20	49.70	1799	2898	2898	2657	3985	1.04	0.95	0.86	0.95	0.95	9.00		
EI22-2	1	22.00±0.40	15.00±0.20	6.00±0.25	11.00±0.20	15.60min			6.00±0.25				4.00±0.20	1.15	42.50	37.00	1573	1838	1838	1838	1685	2527	0.97	0.88	0.80	0.88	0.88	8.40	
EI22-5	5	22.00±0.3	5.50±0.1	15.90±0.25	3.00±0.15	16.70min			5.00±0.15				2.50±0.1	0.33	26.10	78.50	2050	6397	6397	6397	5864	8796	1.24	1.13	1.02	1.13	1.13	10.76	
EI22-6	EI22A1	1	22.00±0.4	15.40±0.2	6±0/-0.50	11.40±0.2	15.60min		6±0/-0.50				4.00±0.2	1.18	43.30	36.90	1598	1789	1789	1789	1640	2460	0.97	0.88	0.80	0.88	0.88	8.40	
EI28-3	1	28.00±0.50	17.30±0.30	11±0/-0.60	12.80±0.20	18.60min			7.5±0/-0.60				3.50±0.20	0.59	49.50	84.40	4178	3600	3600	3600	3300	4949	2.53	2.31	2.09	2.31	2.31	22.00	
EI28-4	1	28.00±0.50	17.15±0.25/-0.1	10.70±0.30	12.65±0.25/-0.1	18.60min			7.20±0.25				3.50±0.20	0.59	49.50	84.40	4178	3600	3600	3600	3300	4949	2.52	2.30	2.08	2.30	2.30	21.90	
EI31.8-1	3	31.80±0.30	8.50±0.10	4.50±0.20	6.00±0.15		8.40±0.20	17.70±0.20	1.50±0.15		32.3±0.3	4.5±0.2	3.00±0.10										0.53	0.48	0.44	0.48	0.48	4.60	
EI33-1	1	33.00±0.50	24.00±0.30	12.70±0.30	19.40±0.40	23.90min			9.70±0.30				5.20±0.20	0.57	67.50	118.00	7965	3691	3691	3691	3383	5075	4.61	4.21	3.81	4.21	4.21	40.10	
EI33-3	1	33.00±0.50	24.00±0.3	12.70±0.3	19.40±0.3	23.60min			9.70±0.31				4.80±0.2	0.57	67.40	117.80	7940	3690	3690	3690	3382	5073	4.58	4.18	3.78	4.18	4.18	39.80	
EI35-1	1	35.00±0.50	24.20±0.20	12.00±0.30	18.20±0.20	24.30min			9.90±0.30				5.50±0.20	0.54	68.00	125.00	8500	3910	3910	3910	3584	5376	3.86	3.53	3.19	3.53	3.53	33.60	
EI42-1	2	42.00±0.7	21.20±0.3	20.00±0.3	15.30±0.3	29.50min			12.00±0.3				6.10±0.3	0.28	67.30	238.00	16107	7540	7540	7540	6912	10367	9.55	8.72	7.89	8.72	8.72	83.00	