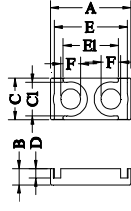
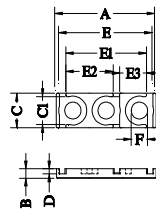


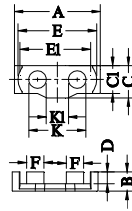
Type.1



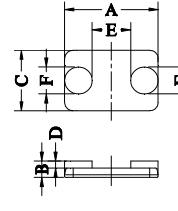
Type.2



Type.3



Type.4



Type.5

NO.	Type	尺寸(Unit: mm)												磁心参数				Al-value (nH/N <sup>2</sup> )±25%						重量 (g/set)												
		A	B	C	C1	D	E	E1	E2	E3	F	K	K1	C1 (mm <sup>-1</sup> )	Le (mm)	Ae (mm <sup>2</sup> )	Ve (mm <sup>3</sup> )	KP4	KP44	KP44A	KP47	KP90	KP95		KP4	KP44	KP44A	KP47	KP90	KP95						
DEP28-1	DEP28	1	28.00±0.35	4.40±0.10	14.00±0.25	11.20±0.15	2.40±0.20	25.20±0.35					6.90±0.15			0.18	19.40	106.00	2057	11729	11729	11729	12217	10751	16127											12.60
DEP28-2	DEP28/4.4	2	28.00±0.35	4.40±0.10	14.00±0.25	11.40±0.20	2.40±0.20	25.20±0.35					6.85±0.15			0.47	20.10	43.20	868	4537	4537	4537	4726	4159	6239											12.76
DEP28-3	DEP28/5.5	2	28.00±0.35	5.50±0.10	14.00±0.25	11.40±0.20	3.20±0.20	25.20±0.35					6.85±0.15			0.51	23.50	45.90	1077	4123	4123	4123	4295	3780	5670											15.36
DEP48-1	DEP48/4.4	3	48.00±0.6	4.40±0.10	16.00±0.30	13.00±0.30	2.40±0.15	45.00±0.6	38.80±0.50	22.8REF	12.9REF		7.85±0.15			0.39	20.60	53.50	1102	5483	5483	5483	5711	5026	7539											24.96
DPQ33-1	DPQ3317	5	33.3±0.5	6.0±0.1	22.0±0.35		2.6±0.125	13.7+0.3/-0.2					9.8±0.15			0.61	47.50	77.30	3672																	26.90
DPQ70.6-1	DPQ70.6/23/31.6	4	70.6±0.8	15.8±0.25	26.5±0.4	23.0±0.3	9.8±0.2	64.6±0.8	58.0±0.5				46.95±0.5	14.35±0.25	46.95±0.5	18.25±0.4	0.37	98.57	264.00	26051																148.00